

# **Bourbeuse Bluebell Race RULES**

*“A good old fashioned paddling race on Missouri’s most crooked river!”*

**ROUTE B: Mint Springs Access to Tea Access—19.3 miles**

## **General Information:**

**Date:** Saturday, April 18, 2026 (back-up is 4/19/26 if unsafe levels on the 18<sup>th</sup>)

**Camping:** Provided at Tea Lakes: Call Tea Lakes at 573-437-5563 for more info.

**Race Start Time:** **10:00 am** PLEASE ARRIVE ATLEAST 90 minutes (8:30am at the latest) PRIOR TO RACE TIME If you are needing to be shuttled—otherwise please arrive no later than 9:00am.

**7:30-8:30am:** Registration Check-In and unloading gear/boat for the day at MINT SPRING ACCESS parking lot. If you need a shuttle, *promptly* travel (20-25-minutes) to Tea Lakes to park your car for the day.

**7:50-8:50am:** Paid shuttles (pay during registration if needed) from Tea Lakes to Mint Springs Access (about 20-25 minutes) provided by the Bourbeuse Bluebell Race.

**9:15am:** Mandatory Race Announcements

**10:00 am:** Race Start

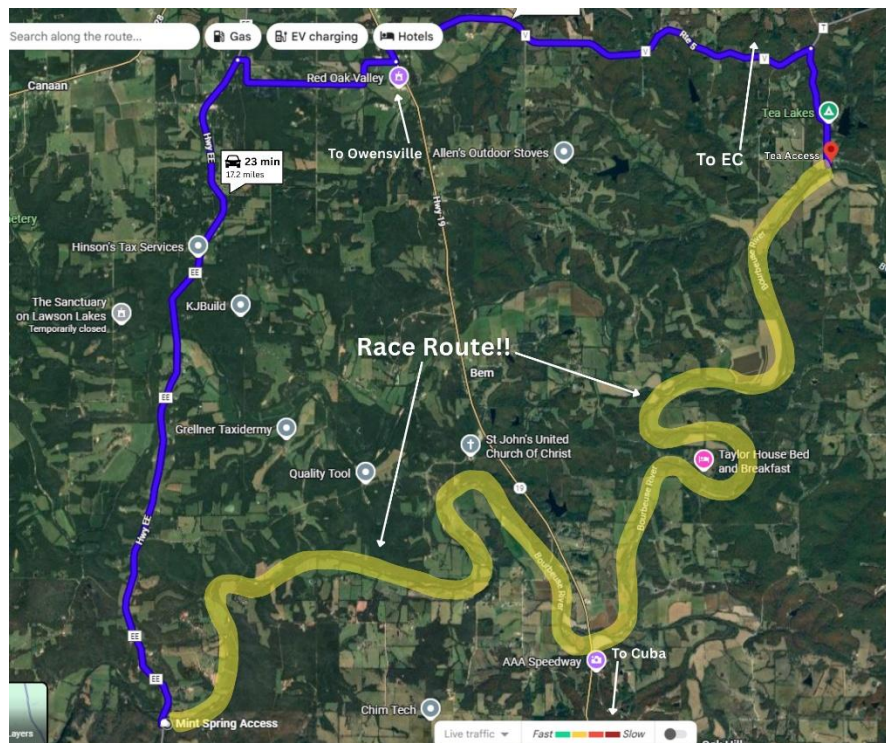
**4:00pm:** Final time for race to end. You will end at Tea Access. From here you will receive the .5-mile fun, free hayride shuttle back to your vehicle parked at Tea Lakes. Then you can drive your vehicle .5 miles back to Tea Access to collect your boat and head to Earth’s Classroom for the celebration. 😊

**Race Length:** 19.3 miles

**Race Start:** MDC Mint Springs Access (Owensville, MO, Crawford County)

**Race Finish:** MDC Tea Access (Rosebud, MO, Gasconade County)

## **MAP OF RACE**



## **Recommended Driving Directions between MDC Accesses:**

From Tea Access parking lot, turn R onto Tea Rd (follow for .6 mi).  
Then turn R to stay on Tea Rd (follow for 1.6mi).  
Merge L onto Indian Bend Rd (follow for .9 mi).  
Turn L onto Hwy AN, which is paved (follow for 2.2 mi).  
At stop sign turn R onto Hwy H (follow for 2.3 mi).  
Turn L onto Mill Rock Rd. (follow for .6 mi).  
Stay to the L to stay on Mill Rock Rd (follow for 1.2mi).  
Destination will be on R. ☺

## **Entry Fee:**

Maximum number of participants allowed is 70 so sign up EARLY

Registration - \$50/person at <https://www.earthclassroom.org/bourbeuse-bluebell-race>

Payment – after filling out registration please pay by Venmo <https://venmo.com/u/earthclassroom> or by a check in the mail. (Mail to: Earth's Classroom, 3649 Pumpstation Rd. Rosebud, MO 63091) First come, first served.

Registration includes yummy snacks in the morning, at finish, and an all-you-can-eat Italian Dinner at EC. *Yes, we are feeding you!* (dietary needs are met by emailing [earthclassroom@gmail.com](mailto:earthclassroom@gmail.com)) **MUST** have your own drinking container for the day, we will NOT supply disposable containers—*yuck!* Keep in mind we will have coffee, tea, Gatorade, and water, but *you supply container!* *Optional Drinking containers will be available for additional purchase including a \$10 glass beer mug with logo at dinner.* Complimentary fills are available for this mug at the dinner/after party. Also, you may BYOB for dinner!!

## **Location and Directions**

Use image and links to help navigate:

**MDC Mint Spring Access (race start—Crawford County, south of Owensville, MO):**

<https://mdc.mo.gov/discover-nature/places/mint-spring-access>

**MDC Tea Access (race start—Gasconade County, 7 miles south of Rosebud, MO):**

<https://nature.mdc.mo.gov/discover-nature/places/tea-access>

**Tea Lakes (parking and FREE shuttle .5 miles N of Tea Access from race finish as well as camping option—573-437-5563)**

<https://tlakes.org/> Tea Lakes is 7 miles south of Rosebud, MO!

**Earth's Classroom (awards ceremony about 4:30-5pm, dinner and festivities to follow)**

[http://www.earthclassroom.org/our\\_facility.html](http://www.earthclassroom.org/our_facility.html)

## Race Divisions

**SOLO-- CANOE, SUP, or KAYAK:** *that's one person...any gender*

Age Classes as of April 18th, 2026: *don't lie!*

<u><i>The Young'ns!</i></u>	<u><i>The Primes</i></u>	<u><i>The Oldies But Goodies</i></u>	<u><i>The Wise?</i></u>
14-30 years	31-50 years	51-70 years	71 and up

**TANDEM—CANOE and KAYAK ONLY:** *that's two people max....any gender*

Combined Age Classes as of April 18th, 2026: *please don't lie 😊!*

<u><i>The Young'ns!</i></u>	<u><i>The Primes</i></u>	<u><i>The Oldies But Goodies</i></u>	<u><i>The Wise?</i></u>
32-60 years	61-100 years	101-140 years	142 and up

## Race Rules

Crafts allowed in this race are: Solo Open Canoe, Tandem Open Canoe, Solo Stand-Up Paddle Board, Solo Kayak, and Tandem Kayak. There is no maximum or minimum craft length, but very short/ wide crafts are not recommended. When the water level is lower, very long crafts are not recommended because of tight meanders. Also, when the water level is low, damage to glass boats, rutters, and skegs can take place.

Bourbeuse Bluebell Race will happen rain or shine on April 18th, 2026, as long as river levels and weather conditions are safe. April 19<sup>th</sup>, 2026 will be used if safer conditions. River level information is available at this web address.

[https://waterdata.usgs.gov/mo/nwis/uv?site\\_no=07015720](https://waterdata.usgs.gov/mo/nwis/uv?site_no=07015720) (If there are questions at all, give us a call at 573-437-7628.) Notifications will be by e-mail and Earth's Classroom's Facebook. *Warning: notice could be short and cell phone service is limited to none at the Bourbeuse River.* Refunds, at your request only, will be available if you cannot attend the race date.

Race will start at approximately 10am and will end at 4pm. Racers on the river after the end time can choose to continue independent of the race.

Race will be limited to 70 racers; first registered, first served (payment by Venmo or mailed check, and on-line registration received by EC must BOTH be done to complete registration).

Racers must be 18 years old by April 18th, 2026, to paddle solo. A 14- to 17-year-old paddler can race in the solo kayak/canoe/SUP division IF paddling next to a committed/responsible adult (18 years or older) solo paddler for the entire race. Racers can be as young as 14 years old by April 18th, 2026 when paddling with a tandem partner that is at least 18 years of age by the same date.

A space must be available on each side of the craft close to the bow on which to affix the official race numbers. Each boat will be assigned numbered stickers to be placed on the craft prior to the race.

Each racer must wear a Type 3 U.S. Coast Guard approved life preserver (PFD) at all times while on the water. A whistle must also be attached to each life preserver.

For CANOE and SUP racers, paddlers must use single-blade canoe/SUP paddles that are human-powered only. Only KAYAKERS can use double bladed paddles. For any craft (canoe, sup or kayak) no motorized, rowing configuration, wind power, or towing is permitted.

Due to the narrow nature of the river, some boat interaction is to be expected. No purposeful interaction to cause other crafts to alter their course is acceptable. Good sportsmanship please.

The original craft must be paddled from start to finish. Any repairs may be made to the craft during the race, but other alterations are not permitted.

Any part of the craft (rudder, outriggers, etc.) that will be below the water line during any portion of the race must be “on board” from start to finish.

Deliberate littering on the river is illegal! Participants must keep their trash in/on their craft and properly dispose of the waste at the race finish.

The majority of the property along the river is privately owned. Stopping should be minimal, if at all, and discreet. Please be respectful.

Overland portages are not allowed except with the following exceptions: tree obstruction, etc. (*we have beavers*). Racers can choose any channel with flowing water within the corridor.

Infractions of any rule during the race event will be grounds for disqualification to be reasonably and fairly determined by Bourbeuse Bluebell Race Officials.

All race members should understand there are serious risks involved in this challenge. The greatest risk is narrow, tight, meandering channels and river hazards such as tree strainers, submerged debris, and logs. Good judgment must dictate self-safety.

All racers and support personnel will enter this race at their own risk and will not hold this event's organizers, judges, officials and sponsors liable for accidents to personnel or damage to any property.

All participants in this event, including paddlers must sign the “Waiver and Release of Liabilities”.

All participants agree to appear in any event related media coverage free of charge.

In formulating the rules that govern this event, every effort has been made to foresee all situations and problems that may arise; however, officials of the Bourbeuse Bluebell Race retain the right to change or amend these rules at any time without liability or recourse from any party regardless of the circumstances. Should such changes or amendments be made, every effort will be made to notify all participants.

THANK YOU FOR SUPPORTING OUTDOOR EDUCATION!!! 😊